



GTDGT-RGL23

Game of Thrones - House of the Dragon Collector Set

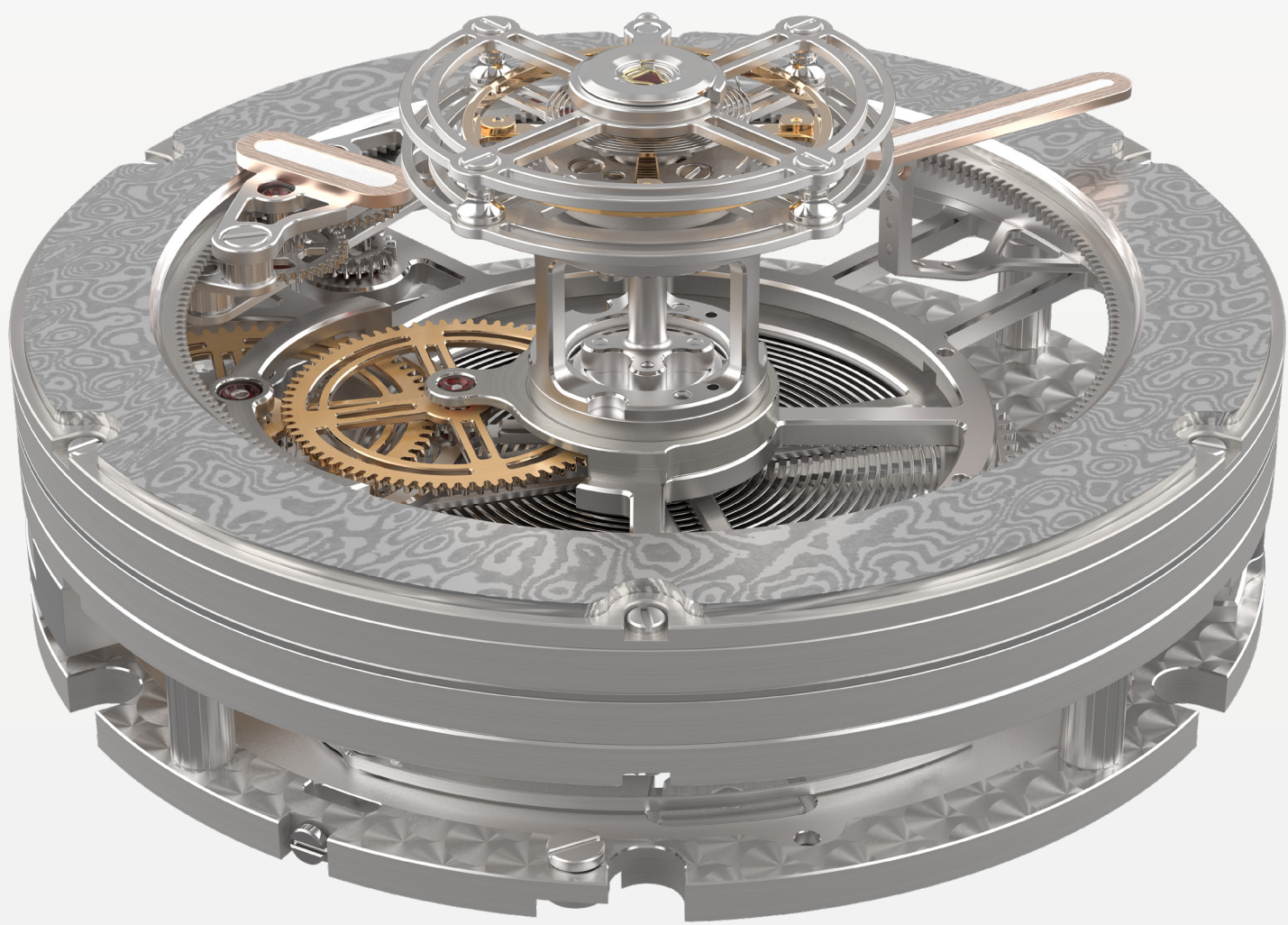
Rhaegal Central Floating Tourbillon

UNIQUE PIECE
45mm, grade 5 titanium



The ultimate Targaryen-inspired timepiece

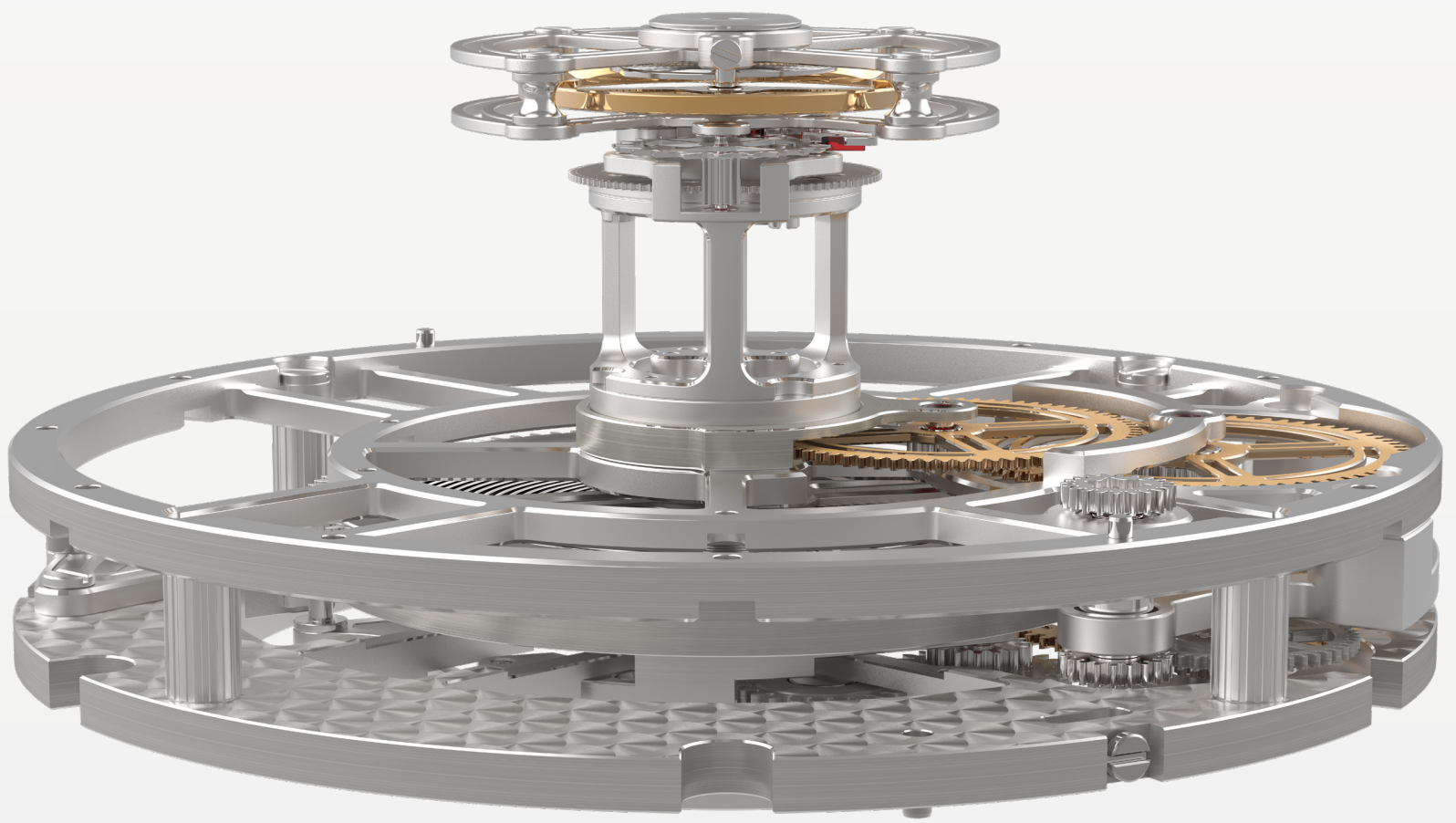
This watch has been meticulously crafted with the precision and elegance befitting a custom commission for a member of the Targaryen family. It encapsulates the distinctive aesthetic codes of the Targaryens, evident in the opulence of its watch case and the intricate details of its movement.



KS 7'005 Caliber

The Game of Thrones Central Floating Tourbillon is equipped with the KS 7'005 caliber, a manual-winding patented movement designed, crafted and assembled in our workshops.

219 components and an oversized barrel placed at the center of the movement boasts it a power reserve of 120 hours, with an optimal accuracy and longevity.



Floating in the skies

The tourbillon and its fixed second wheel are levitating above the movement and its hands, providing a never-before-seen perspective into the mesmerizing mechanics of the tourbillon. Placed just below the sapphire crystal dome, it is like a dragon gliding across the heavens looking down from above.



Peripheral time display

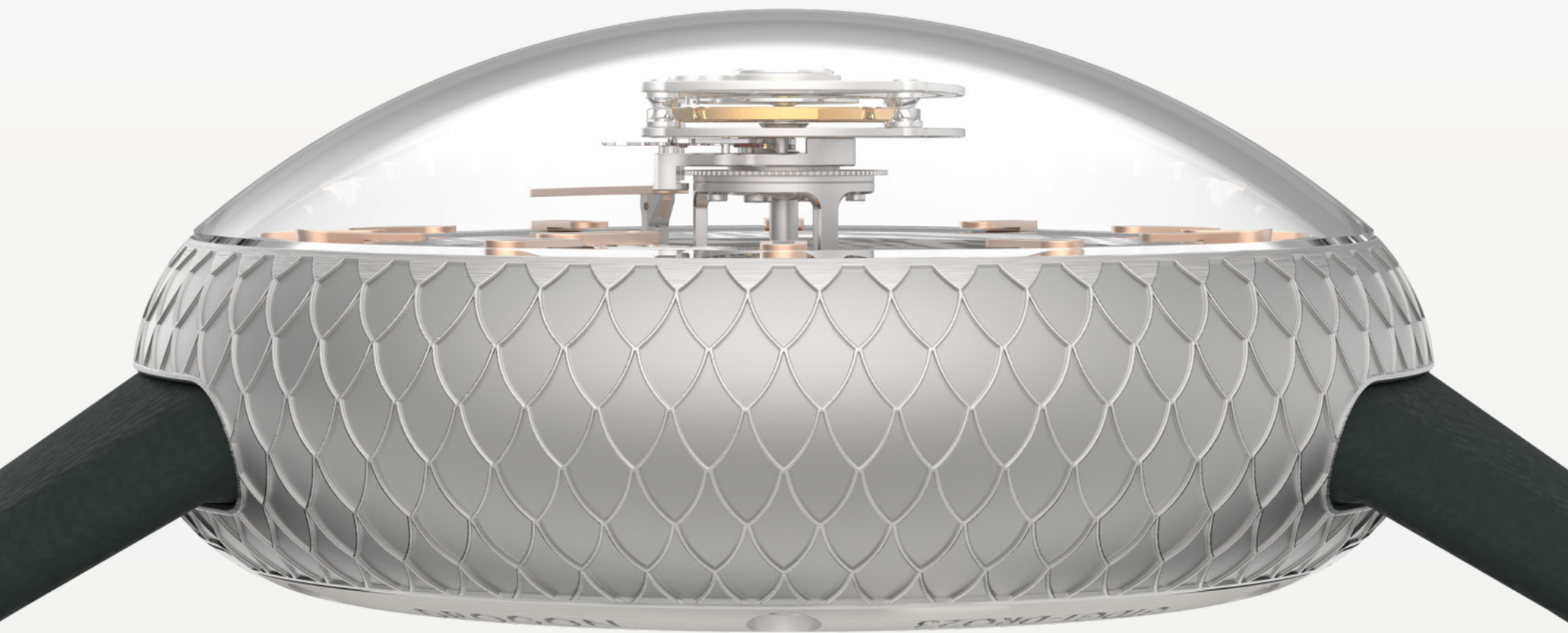
The hours and minutes are displayed in a unique peripheral format made possible by a planetary gear system that orbits 360° around the tourbillon. A 12-factor gear ratio allows the planetary system to empower the progression of the hours. Adding to this innovation, the hour-and-minute display system is fixed on two broad, high-precision ball bearings designed to optimize the movement's efficiency as much as possible.



Valyrian Steel Dial

The dial, made of Damasteel®, is reminiscent of Valyrian steel that fans will recognize thanks to its striated appearance, made up of multiple dark and shimmering layers.

The Damascus steel used in the Dragon Central Tourbillon dial is crafted by Damasteel, the same foundry that forged the metal used in the HBO series' swords.



A 45mm titanium engraved case

The ergonomically designed watch case, crafted from grade 5 titanium, intricately replicates the scales of a dragon through three-dimensional engraving, and a sapphire crystal dome safeguards the central tourbillon.



Case Back

Furthermore, the Targaryen House sigil, a three-headed dragon breathing flame, is hand engraved in the center of the titanium watch case back. Each case back is uniquely identified by the engraved name of the singular dragon that inspired the collector set, with only one set dedicated to a single dragon.



Winding the watch and setting the time are effortlessly achieved using the «D-ring crown» on the case back and the «Time Set» push button, strategically positioned at 3 o'clock along the watch's edge. This system not only maintains design symmetry and enhances comfort compared to a traditional crown, but it also facilitates quicker winding, adding a practical touch to the overall experience.



A Dragon egg functional sculpture

The Dragon Egg Functional Sculpture, designed by Marco Tedeschi, is produced in collaboration with the French workshop Leblon Delienne.

Each Dragon Egg has been painstakingly airbrushed and hand finished to create a unique finish.

Height with base 231.5mm (9.11 inches)	Height without base 214.90mm (8.4 inches)	Diameter 168mm (6.6 inches)
Weight ≈2.2kg (≈4.8 pounds)	Material Resin & Cushion in microfiber cloth	



Watch Manufacture × Art Studio

The egg opens to serve as a nest for the Game of Thrones Central Floating Tourbillon or any timepiece of choice, which can be placed on a cushion supported by two towers inspired by the design of Dragonstone Castle, the ancestral seat of House Targaryen. The base of the stand features seven slots, one for each of the saga's seven kingdoms.

A collection of unique pieces

Each Collector Set is inspired by one dragons presented in the fantasy saga "Game of Thrones" and its prequel "House of the Dragon".

At the intersection of Haute Horlogerie and fantastical realms, each Game of Thrones Collector Set embodies the essence of Kross Studio. The watch complication is contemporary, seamlessly blending form and function in a universe that captivates the imagination, providing enthusiasts with a unique immersion into the heart of Westeros.

Technical Specifications

CASE

Diameter
45mm

Thickness
20mm

Thickness without crystal
12.5mm

Material
Grade 5 titanium

Crystal
Dome-shaped anti-reflective sapphire crystal

Case Back
Grade 5 titanium

Crown
D-ring crown in grade 5 titanium

Water Resistance
30m or 3ATM

MOVEMENT

Caliber
KS 7'005

Functions
Manual-winding patented floating central tourbillon

Height
15.28mm

Overall Diameter
33mm

Power Reserve
5 days

Frequency
21'600 bph / 3 Hz

Jewels
27



Technical Specifications

DIAL & HANDS

Dial

Black inner bezel with white minute markers

Appliques

Gold-plated hour markers with white Super-LumiNova®

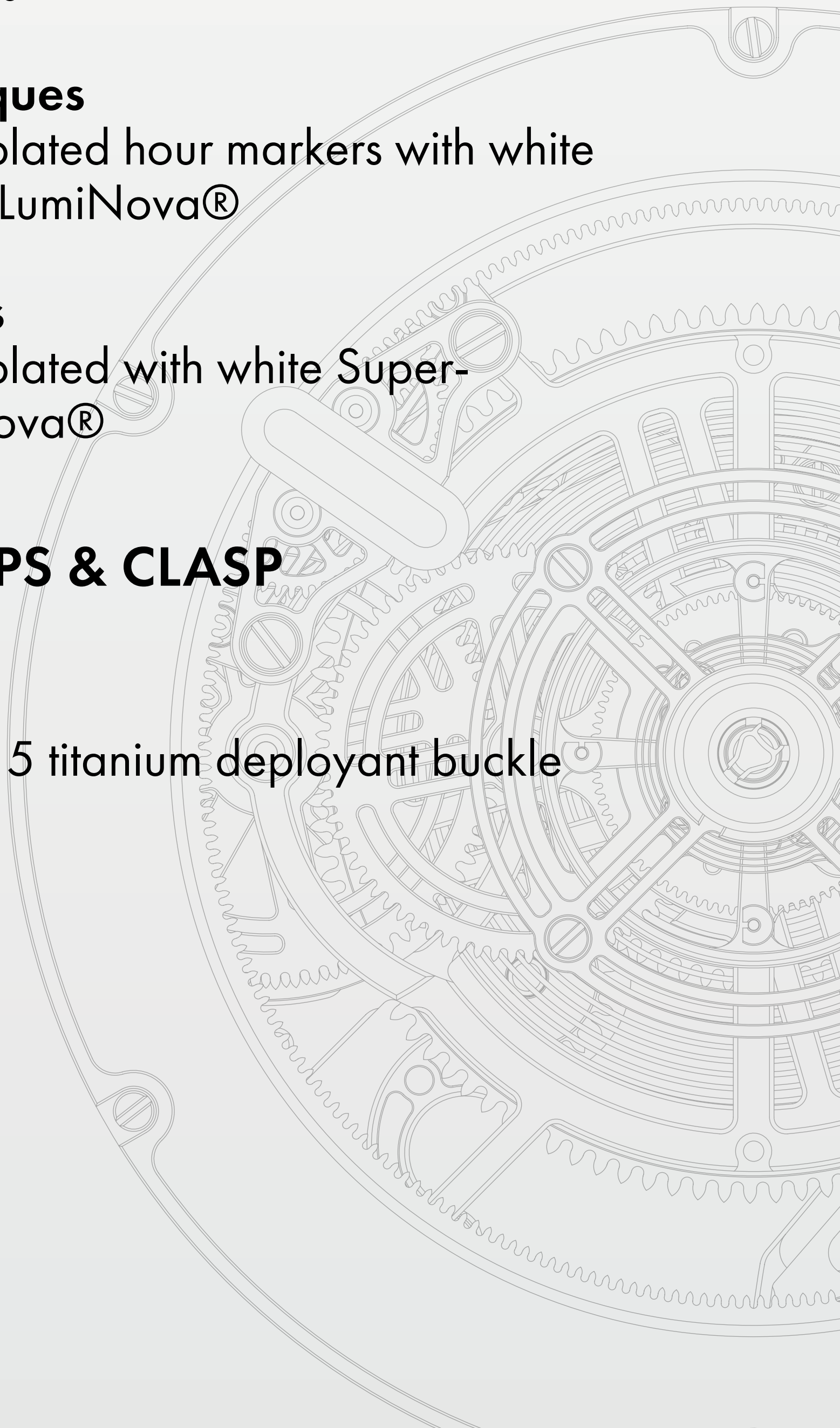
Hands

Gold-plated with white Super-LumiNova®

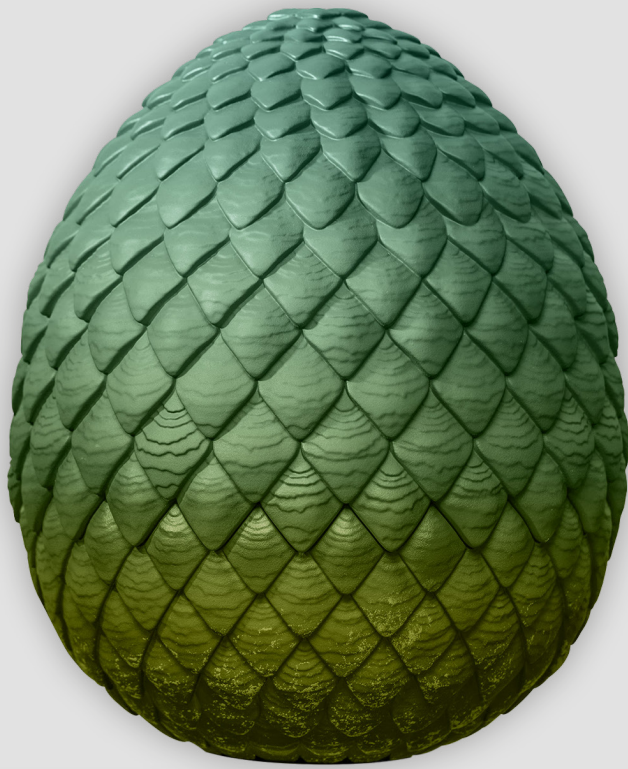
STRAPS & CLASP

Clasp

Grade 5 titanium deployant buckle clasp



In the set



Rhaegal Central Floating
Tourbillon Watch

Dragon Egg

Set of two straps

Owner's book

Microfiber cloth & Art gloves