



KS05-TI-SODA

# **KS 05 Sodalite Central Floating Tourbillon**

**LIMITED EDITION**

45mm



# Collection

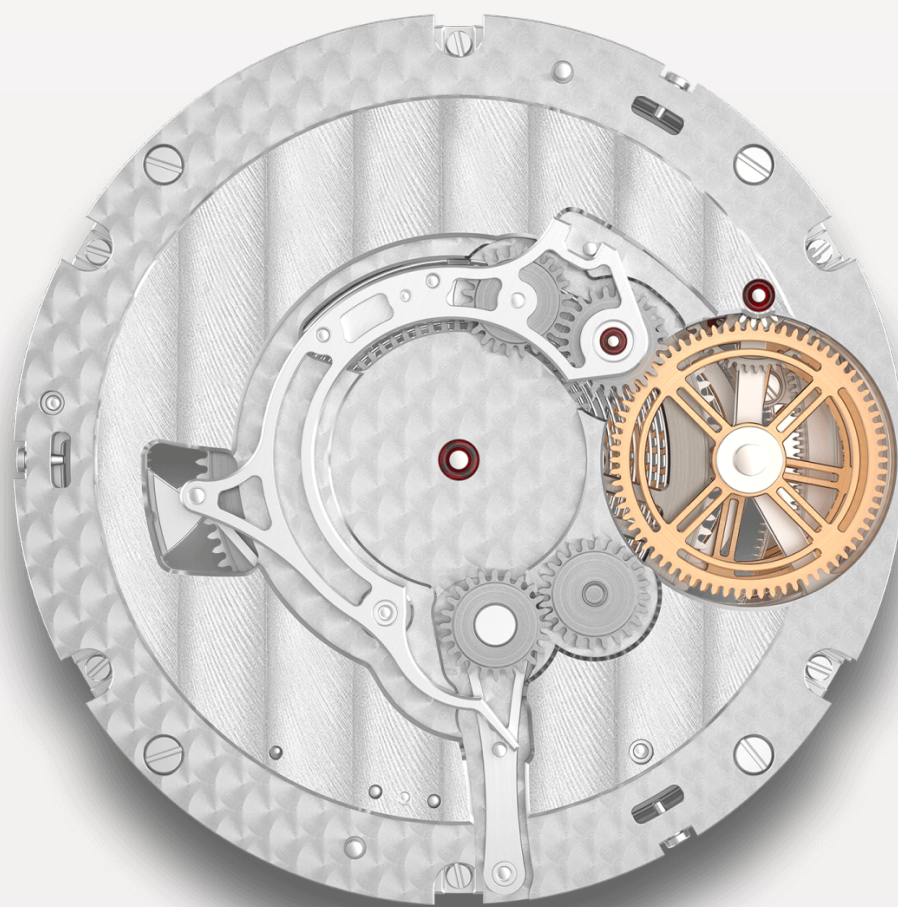
The KS 05 encapsulates Kross Studio’s aptitude for revolutionary timekeeping while maintaining the core principles of traditional watchmaking. This collection heralds a transformative era in luxury timepieces, effortlessly merging artistic craftsmanship, pioneering engineering, and distinctive personal expression.

The KS 05 Central Floating Tourbillon Sodalite comes in a grade 5 titanium and 18-carat pink gold case. Each version can be adorned with 281 pavé-set D-F VVS1 diamonds, for approximately 5.09 carats. Each iteration is limited to 10 pieces.



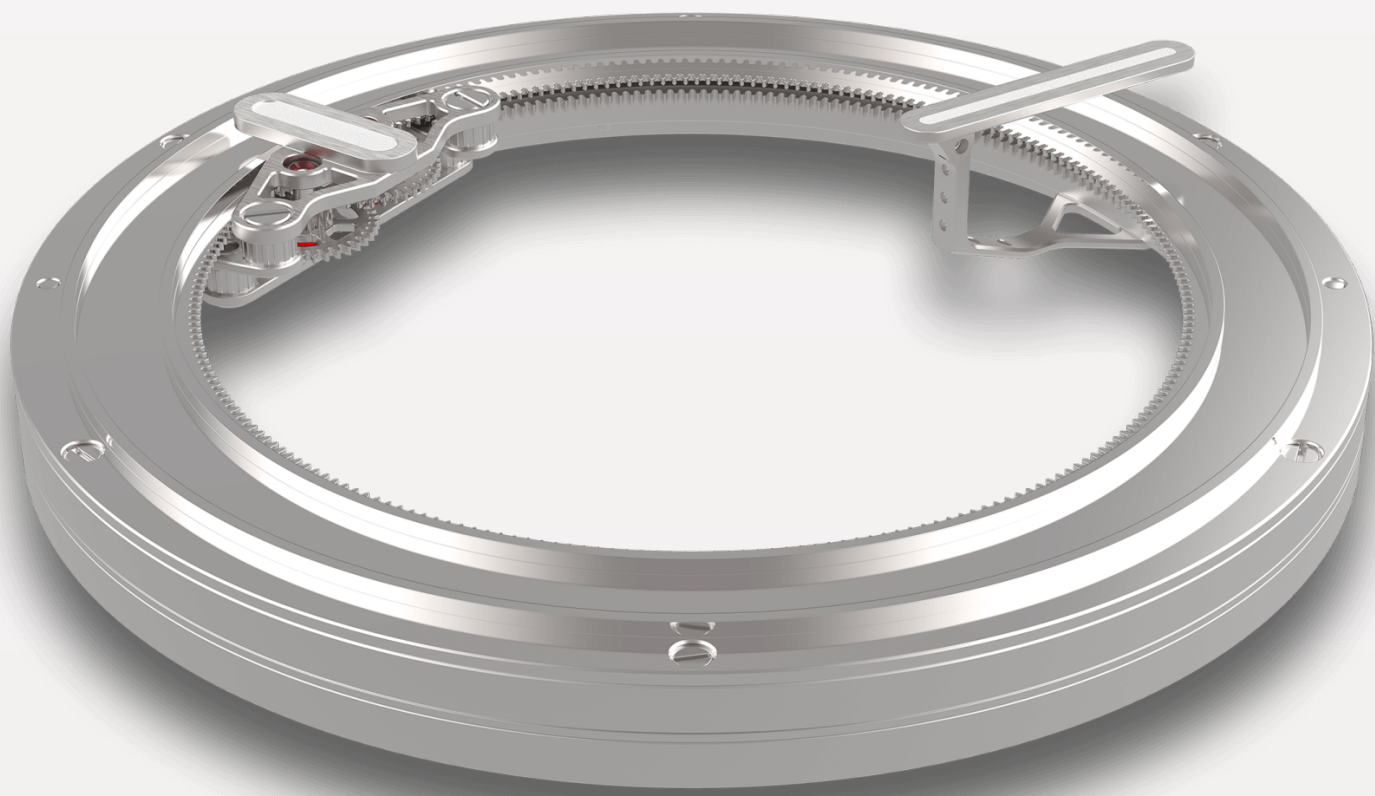
## KS 7'005 Caliber

This manual winding mechanical movement counts 220 components including 27 jewels, and its construction provides exceptional performance. The main functions such as winding, energy accumulation, regulation, and display are coaxial and placed on the central axis. Thus, the barrel, whose diameter is larger than the radius of the plate, gives the movement a power reserve of 120 hours with chronometric performance.



## KS 7'005 Caliber

The balance wheel overlooks the barrel, just like the tourbillon and its fixed seconds wheel, which are elevated above the movement and hands. A patented technical innovation, Kross Studio's central floating tourbillon offers a unique perspective on its complex mechanics.



## Peripheral time display

The time display mechanism operates peripherally, working around the barrel and the tourbillon mechanism. The peripheral display orbits 360 degrees around the tourbillon, and the reduction ratio between the hour and minute is achieved through a planetary system mounted on two ceramic ball bearings.



## The dials

Crafted of Sodalite glass, it gives the watch a nice shimmering touch. The watch is composed of several elegant and functional outer and inner sub-dials.

The outer dial, known as the rehaut, is affixed directly onto the case. It carries the time markings and indices, designed here by Kross to promote a highly legible, instant reading of the time at a glance. Its design and position offer a seamless aesthetic transition from the case to the watch's interior, drawing the eye towards its groundbreaking central floating tourbillon.



## The dials

The intermediate dial is mounted on top of the movement, specifically on the fixed hour wheel. It serves as a harmonious bridge between the outer dial and the heart of the watch.

The inner dial, designed with an opening at 9 o'clock, is fixed onto the main plate of the movement. Positioned beneath the floating tourbillon and the time display mechanism, this innovative dial design allows a clear view onto the gear train and sets a captivating backdrop for the tourbillon, adding depth and setting a visual stage to display the watch's meticulous engineering.



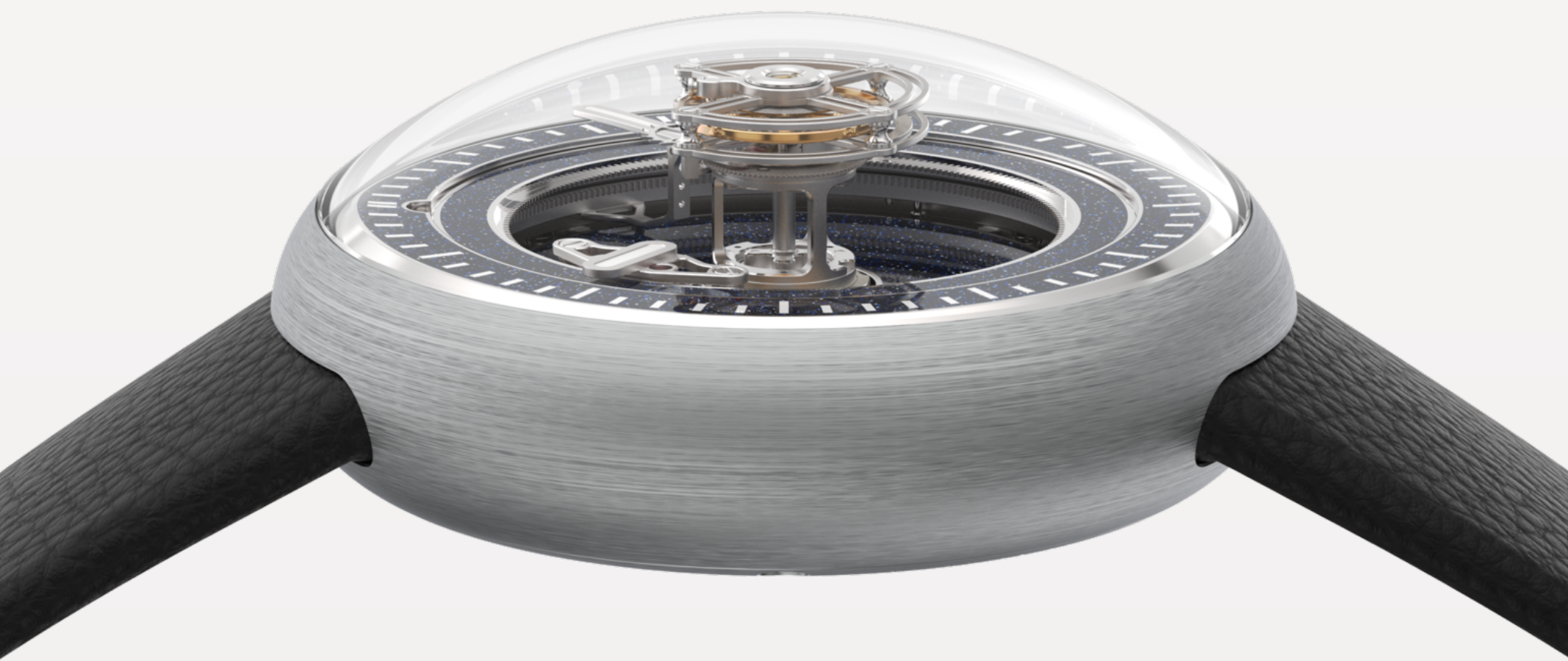
## Sodalite

Each sub-dial is crafted of sodalite, an attractive blue gemstone that is part of the silicate group, known for its rich color and profound meaning in various cultures. Sodalite formation often occurs in sodium-rich environments, where it crystallizes from aqueous solutions rich in silicates, sodium, and alumina. Temperature and pressure conditions, as well as the chemical composition of the environment, influence its formation. Its color can vary from deep blue to royal blue, often with white veins caused by the presence of calcite.



## The 45mm case

Devoid of lugs or edges, the KS 05 case exhibits a sleek, seamless, and ergonomically optimized profile. Instead of a visible crown at 3 o'clock, Kross Studio opted for a clever D-ring crown integrated into the case back, which enables winding and time adjustments without disrupting the watch's clean lines.



## A crystal dome

The crystal also receives full technical consideration, with an anti-reflective coating on both its exterior and interior, and the application of an anti-UV and anti-static treatments to the crystal interior.



## Case Back

The D-ring crown is integrated into the case back, which enables winding and time adjustments without disrupting the watch's clean lines.

An interchangeable strap system is also incorporated, hidden on the case back, which allows the wearer to swap and update their watch strap with ease.

As a final touch, the Studio's signature cross emblem is delicately emphasized on the barrel bridge.



## Collection

The KS 05 Central Floating Tourbillon Sodalite comes in a grade 5 titanium and 18-carat pink gold case. Each version can be adorned with 281 pavé-set D-F VVS1 diamonds, for approximately 5.09 carats. Each iteration is limited to 10 pieces.

# Technical Specifications

## CASE

**Diameter**  
45mm

**Thickness**  
20mm

**Thickness without crystal**  
12.5mm

**Material**  
Grade 5 titanium or  
18-carat pink gold case

**Crystal**  
Dome-shaped anti-reflective sapphire crystal

**Case Back**  
Grade 5 titanium

**Crown**  
D-ring crown in grade 5 titanium

**Water Resistance**  
30m or 3ATM

## MOVEMENT

**Caliber**  
KS 7'005

**Functions**  
Manual-winding  
patented floating central  
tourbillon

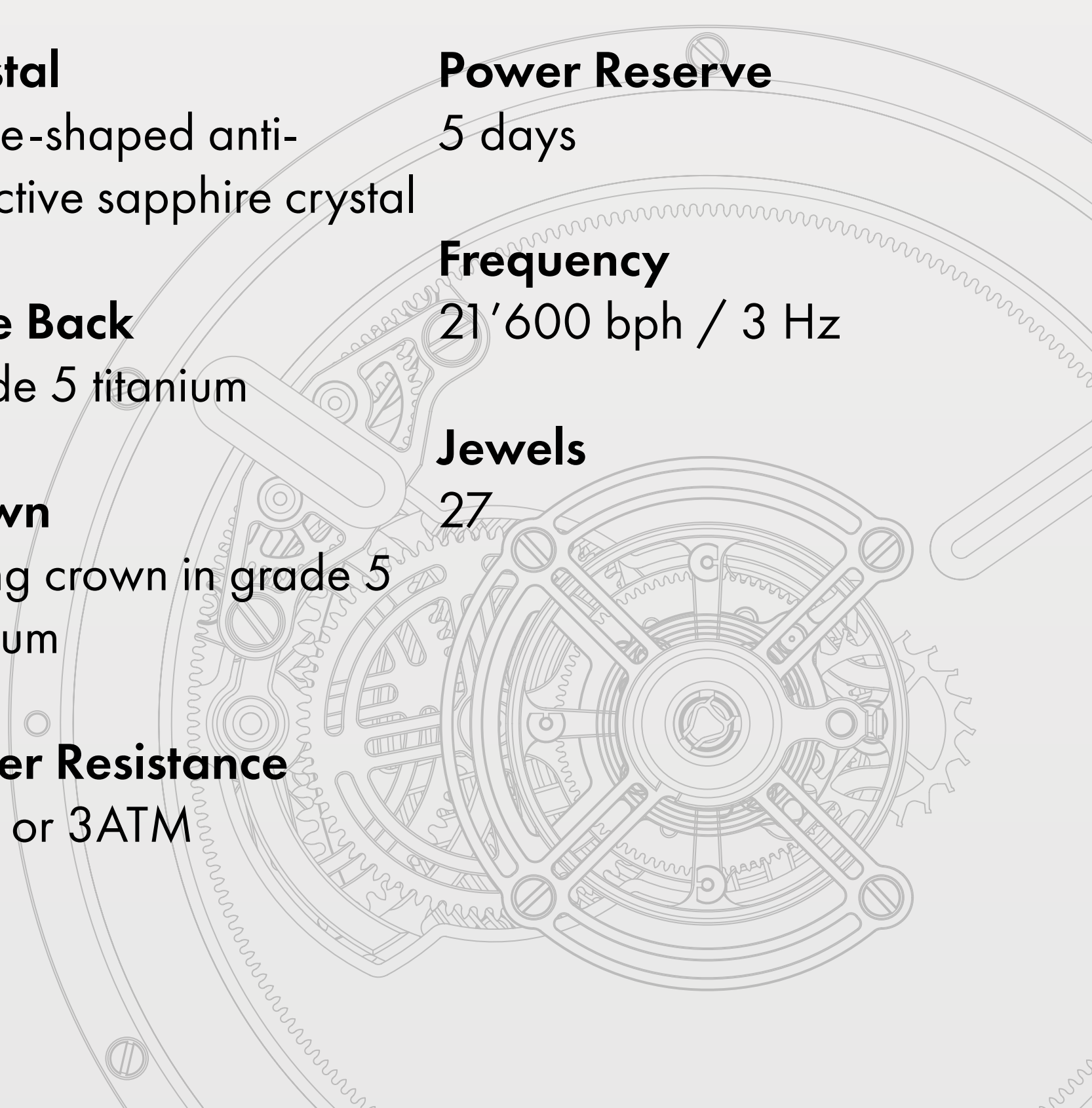
**Height**  
15.28mm

**Overall Diameter**  
33mm

**Power Reserve**  
5 days

**Frequency**  
21'600 bph / 3 Hz

**Jewels**  
27



# Technicals Specifications

## DIAL & HANDS

### Dial

Sodalite stone triptych dial

### Hands

Rhodium-plated with white Super-LumiNova®

## STRAPS & CLASP

### Clasp

Grade 5 titanium deployant buckle clasp

